



NaAVIC

Quick Start Guide

(V 3.0.5)

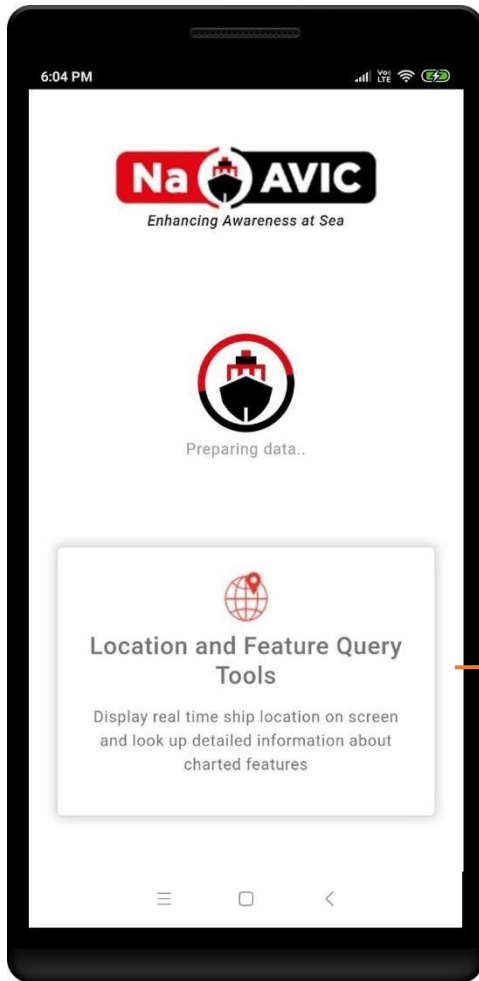
NaAVIC is a registered trademark of IIC Technologies.

Table of Contents

Loading Screen	4
Location Access	5
Take a Tour.....	6
Landing Screen	8
Search.....	9
Location.....	10
Layers	12
Menu Screen	14
Route Planning and Management	17
Import Route / Track.....	18
Cross Track Marker	19
Add Waypoint	20
Delete Waypoint	21
Edit Waypoint	22
Clear Route.....	23
Reverse Route	24
Export Route	25
Waypoint List	26
Point Of Interest (POI).....	27
Navigation	33
Measure Distance from Ship.....	35
Measure Distances.....	36
Feature Information.....	37
Add Features Object	38
View User Object	39
Man over Board	40
Offline Maps.....	41
NaVIC Messenger.....	42
Notification View	43
Settings.....	44
Units	45
Settings.....	46

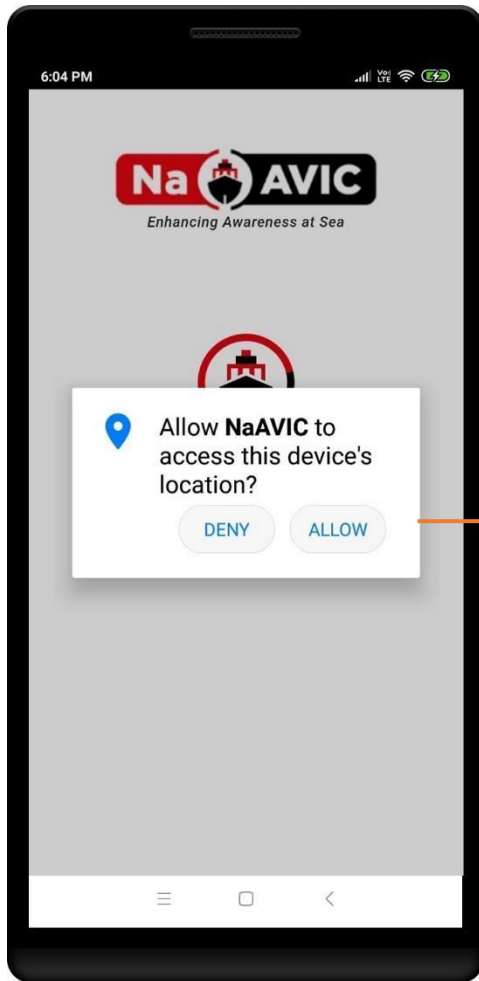
Night Mode	47
Profile	49
Edit Profile.....	53
Help	54

Loading Screen



The application's features are displayed while the app loads

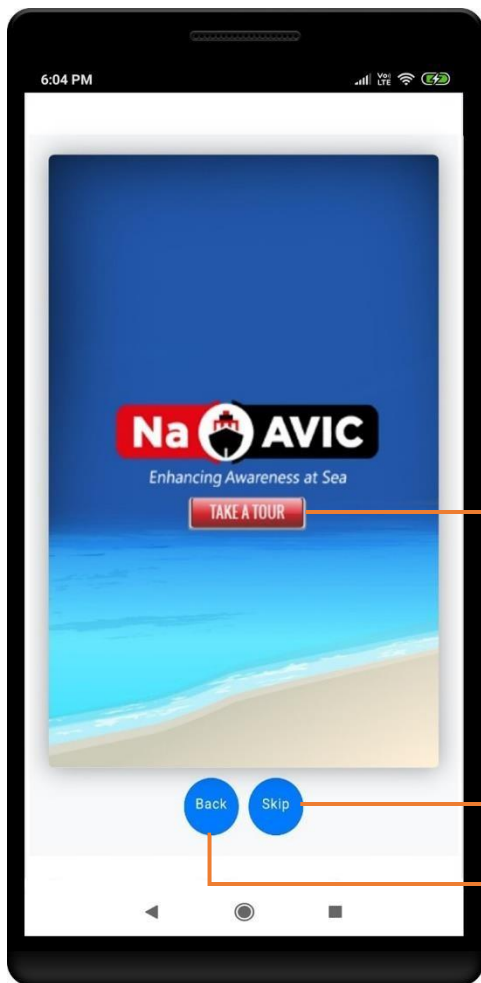
Location Access



Allowing access will help track the user's location accurately

Take a Tour

Take a tour helps with the onboarding process for first time users by showing them how to add/edit/clear/delete a waypoint and import/export a route. Once logged in, first time users are redirected to this screen.



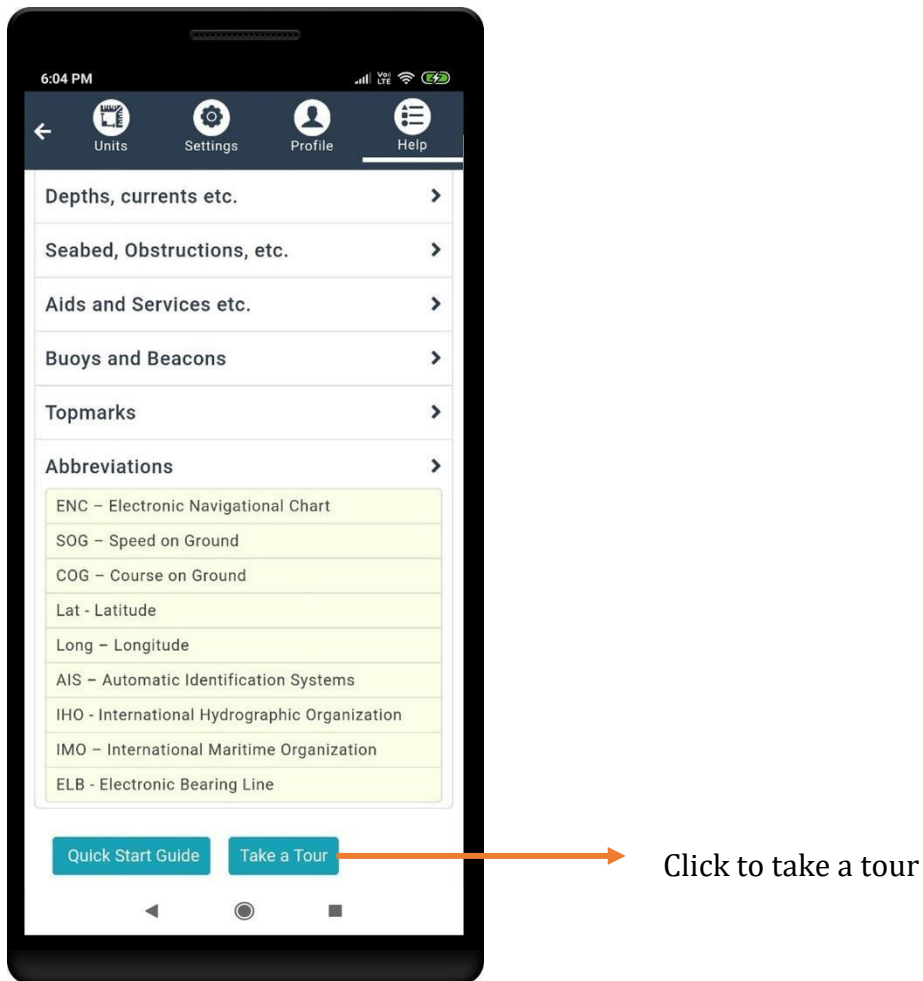
Click to take a tour

Click to skip the tour

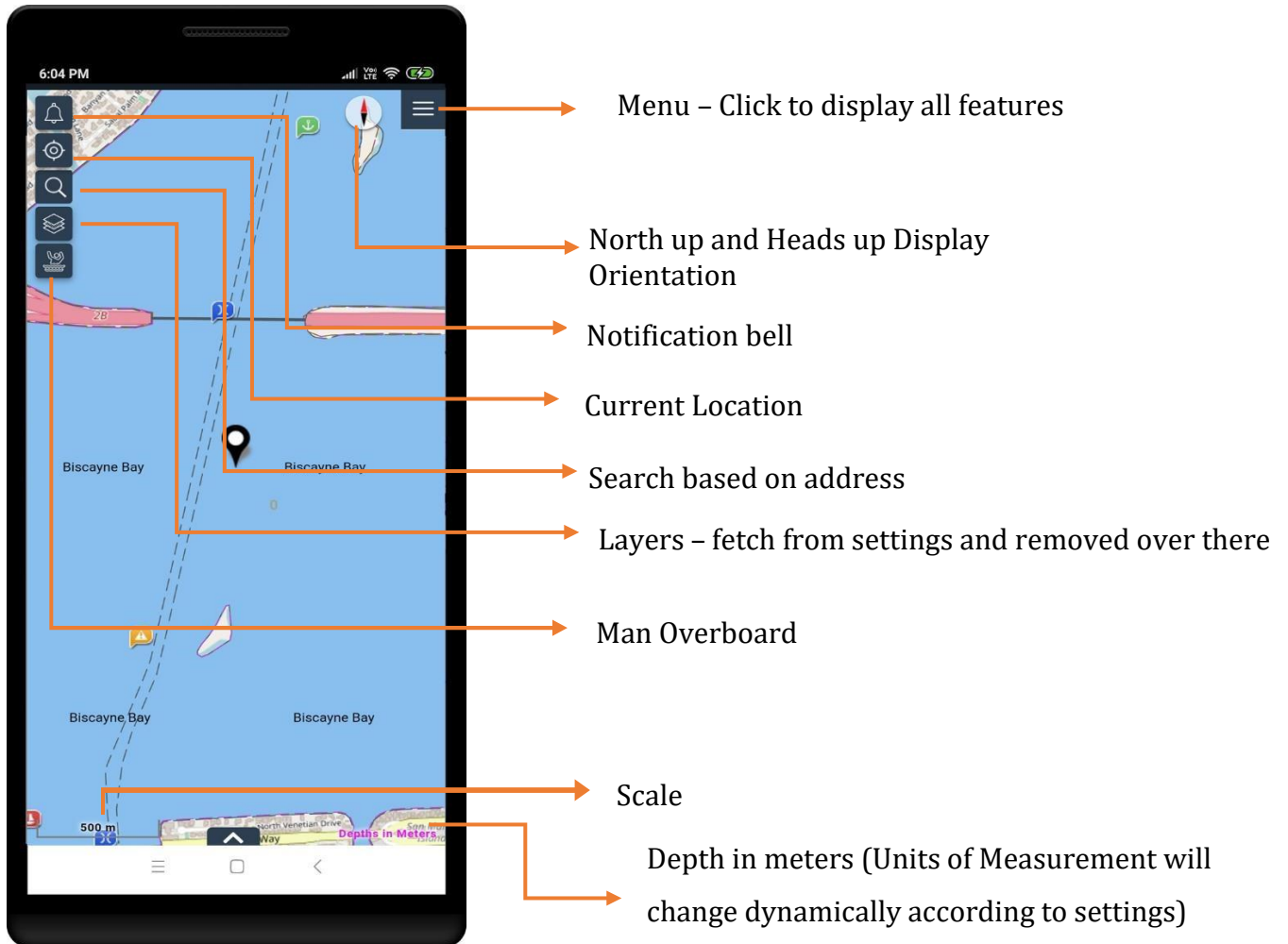
'Back' will redirect the user to the landing screen

Application provides facility to take a tour If Users wishes to avail this feature later the part.

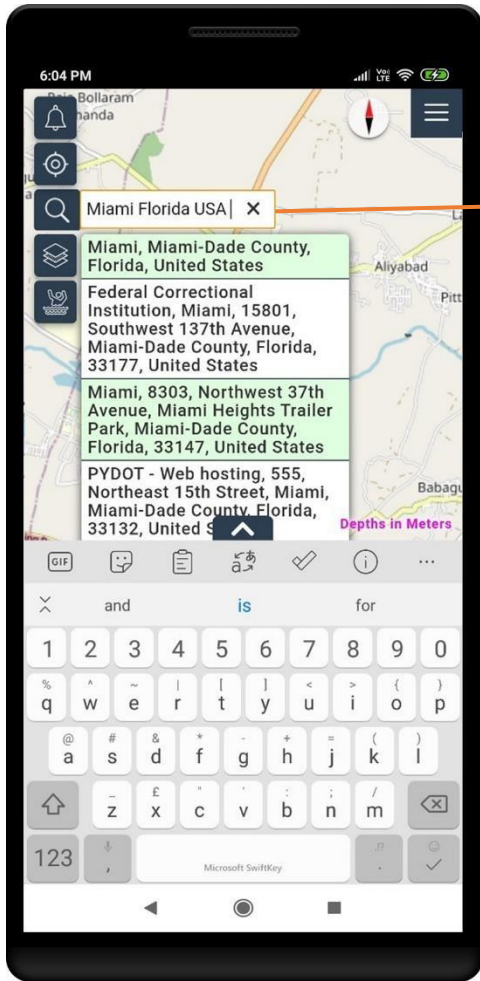
Go to Settings > Help



Landing Screen



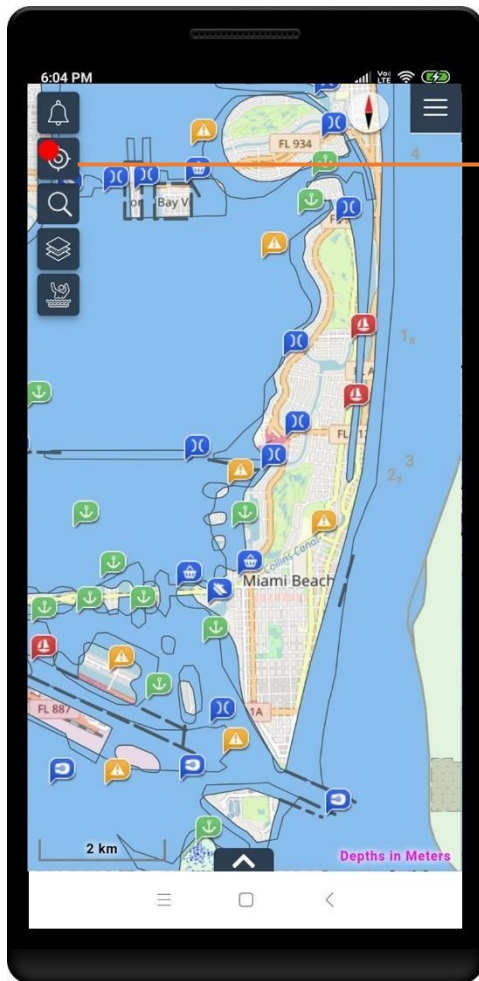
Search



Search based on address

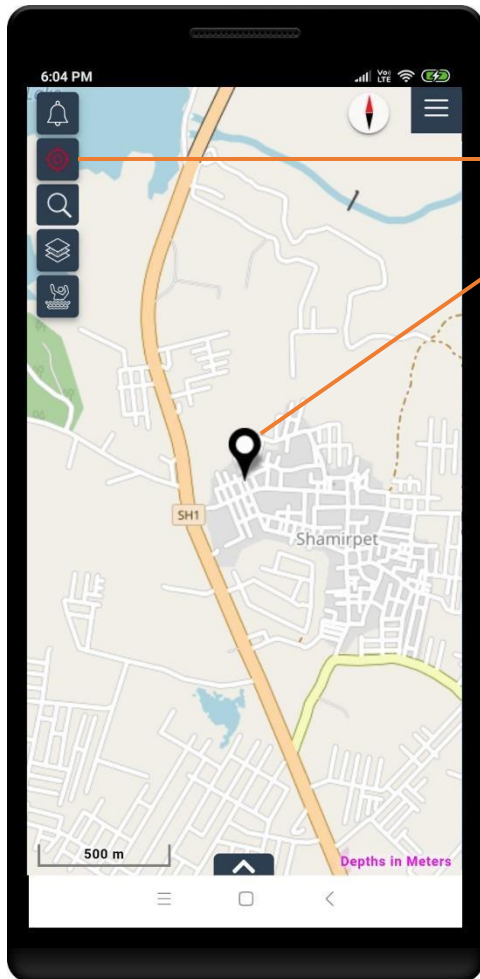
Location

A red dot on the current location icon indicates that the device location setting is turned off



Indicates device location is turned off

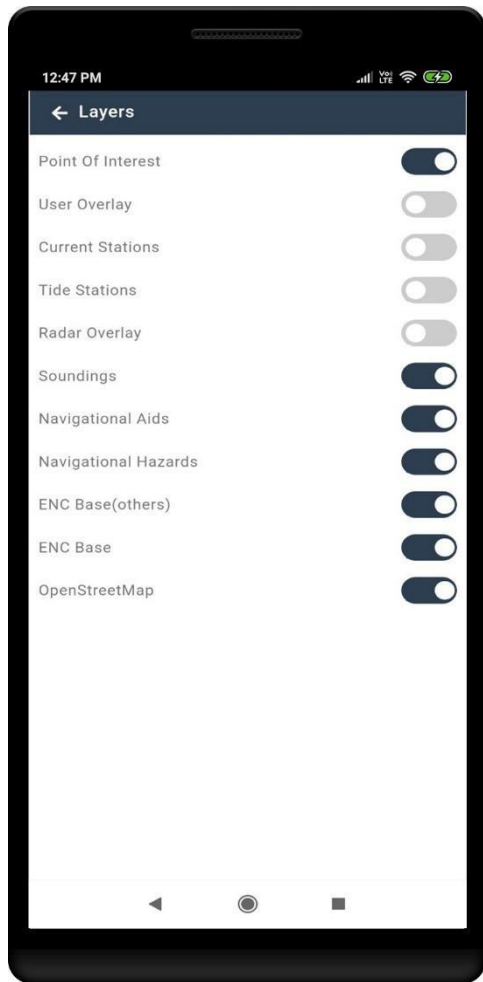
Tap on the current location icon to detect and show the device's current location on the map. The icon color then turns red



Shows the device's current location on the map

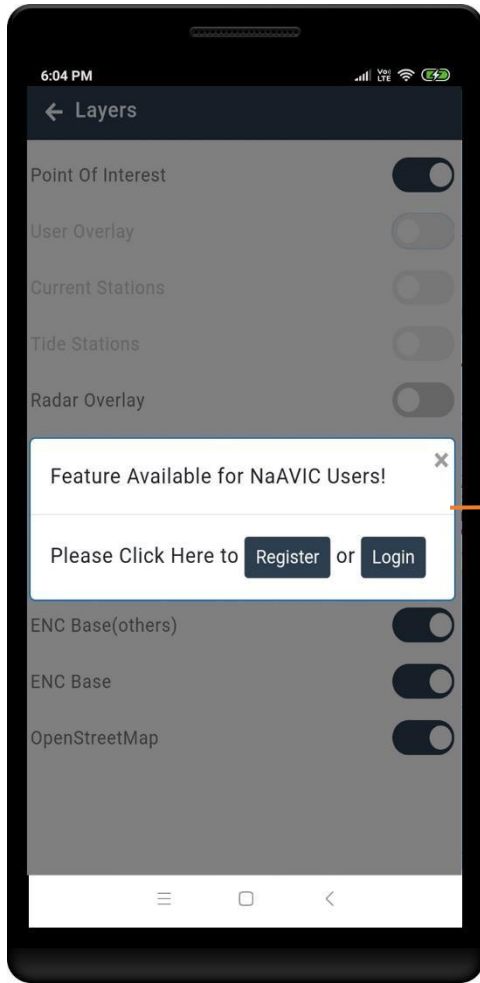
Note: The user has to enable location access to display the device's current location

Layers



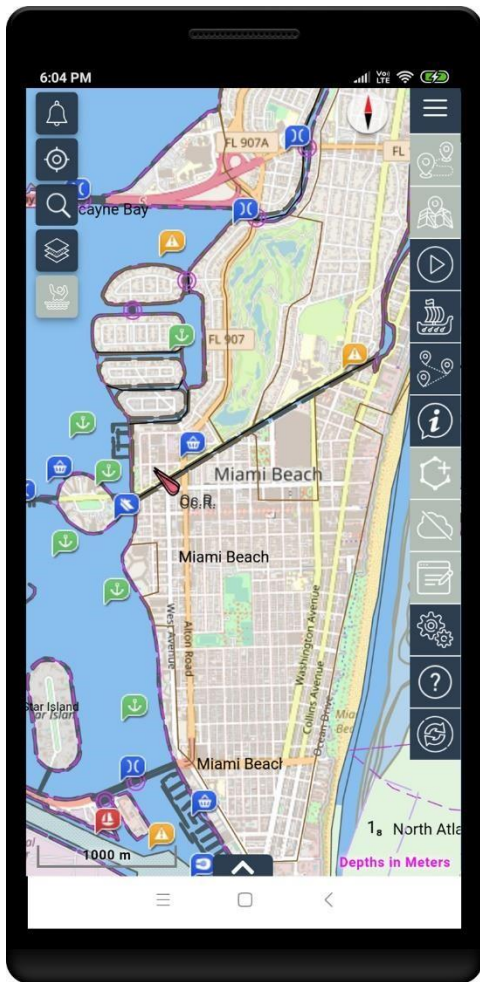
Choose which layers you want to displayed on the map.

Some layers are disabled in the application by default. To enable these layers, the user has to sign in or register for NaVIC.

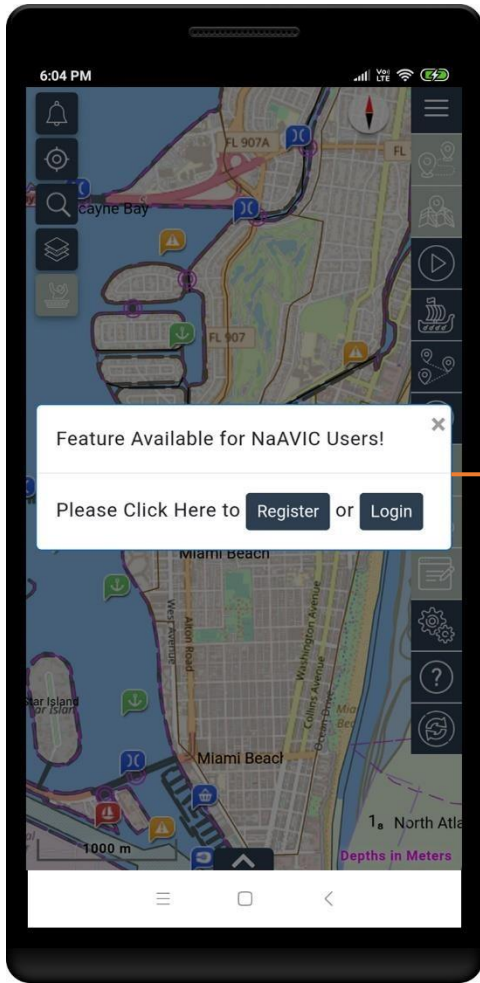


Register / Login to enable all

Menu Screen



Some functions are disabled in the application by default. To enable these functions, the user has to sign in or register for NaVIC .



Register / Login to enable all menu functions

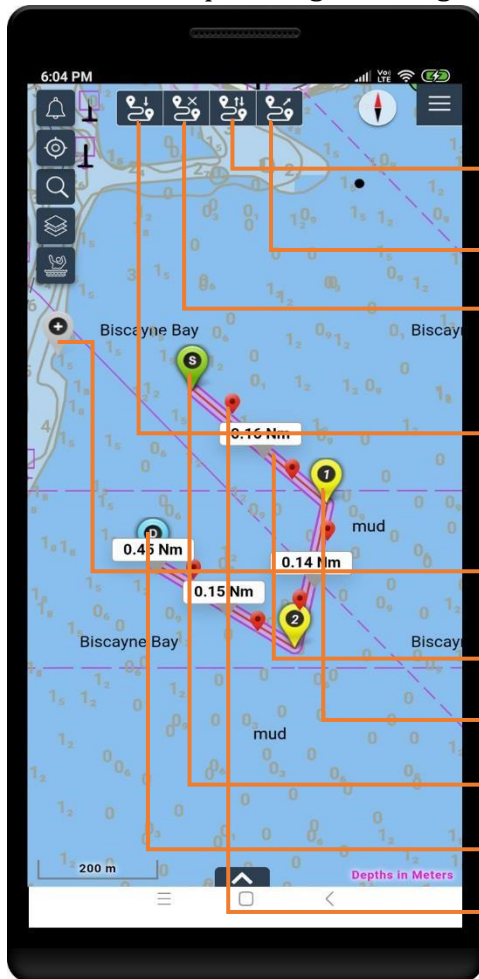
All menu functions will be highlighted once the login is successful.



Route Planning and Management

This feature allows users to create comprehensive routes for navigation. Users can create, edit, clear, and redirect Waypoints to help plan and update their route.

Menu > Route planning & management icon



This enables users to reverse the existing route – start and destination points

Export route

This lets users clear the route

This lets users import saved routes (RTZ or KML formats)

This lets users create waypoints. Drag and drop to create a new waypoint

Route

Waypoints


Start Waypoint

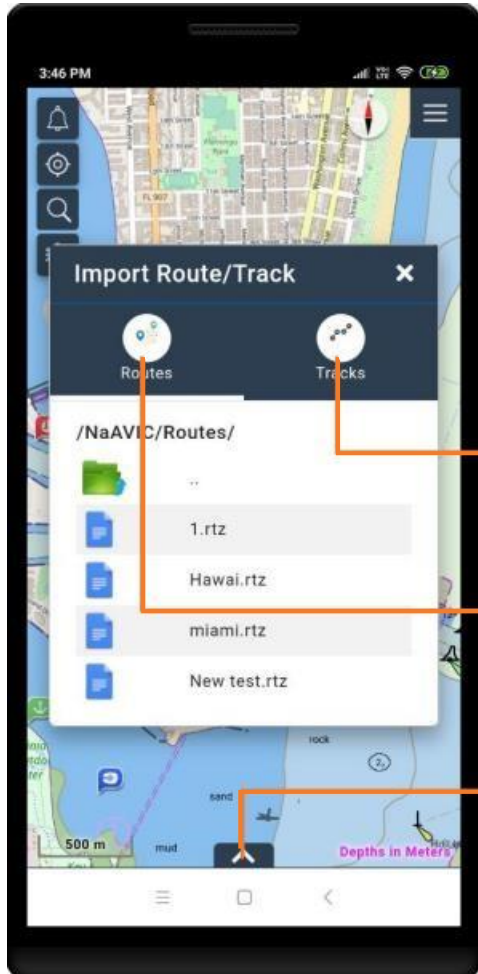
End Waypoint

Cross track marker

Import Route / Track

This feature allows users to import a saved Route or Track and activate that for navigation.

Tap on Import Route / Track icon 

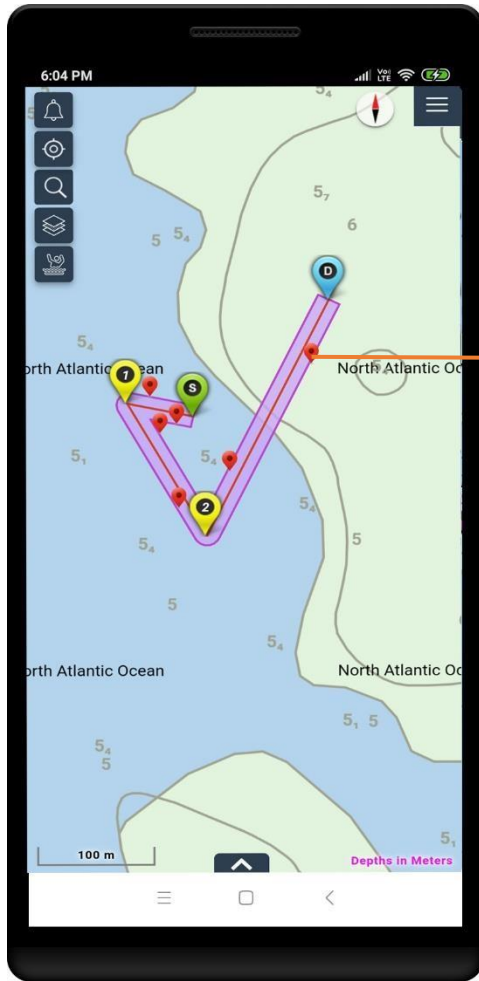


User can import Tracks in RTZ or KML formats

User can import Routes in .rtz or kml formats

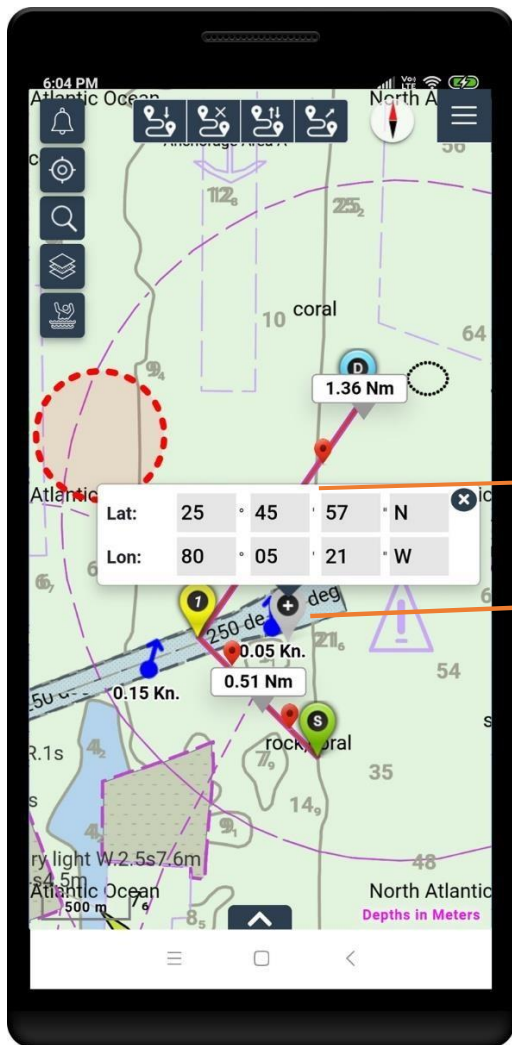
Swiping up displays details such as Navigation data or Waypoint list.

Cross Track Marker




Drag red marker to adjust cross track buffer that is XTR and XTL

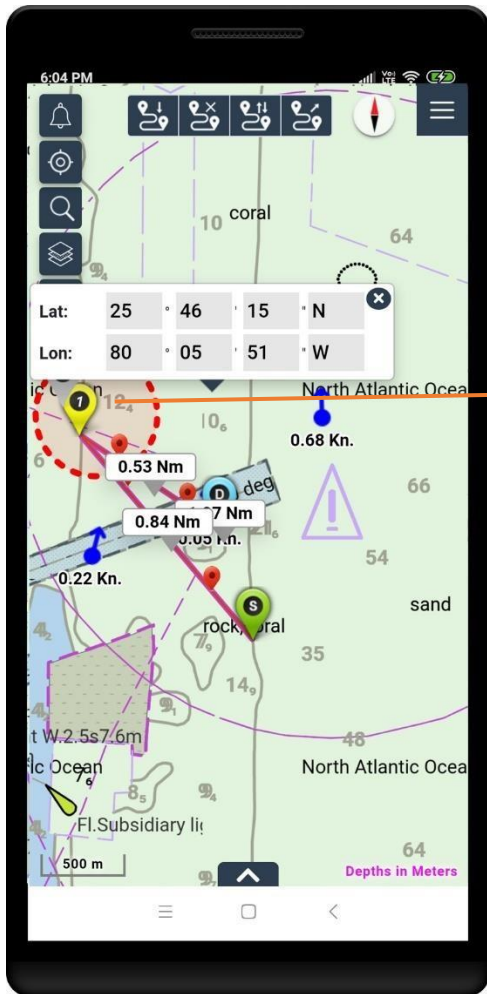
Add Waypoint



Distance between the waypoints displayed by app automatically

Drag and drop  to add waypoints


Delete Waypoint

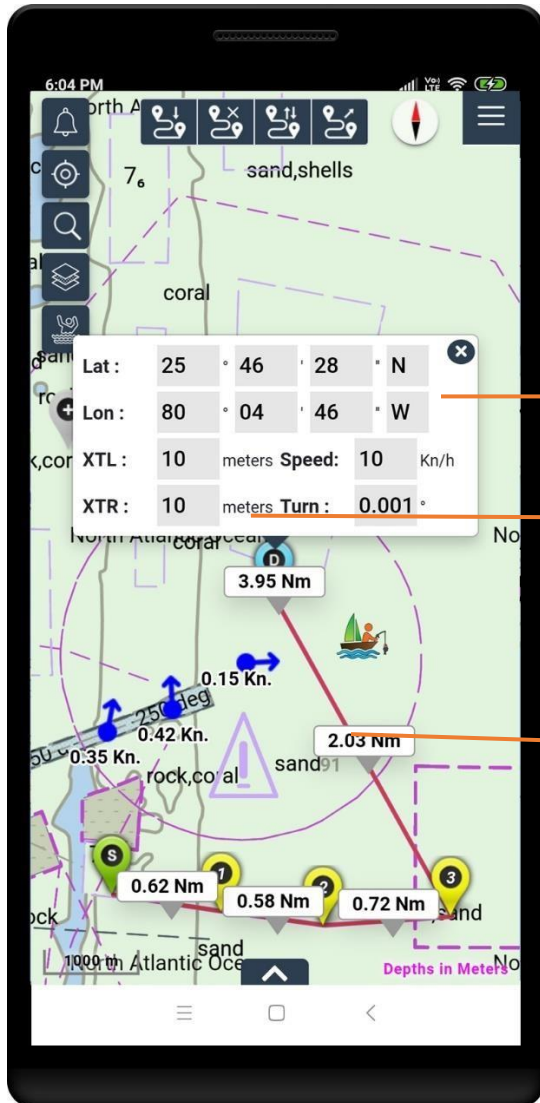


Drag and drop marker into the red circle, the waypoint gets deleted

Edit Waypoint

This feature allows users to edit a waypoint and make changes to parameters such as position, cross track buffer, speed, and rate of turn.

Menu > Waypoint icon. 

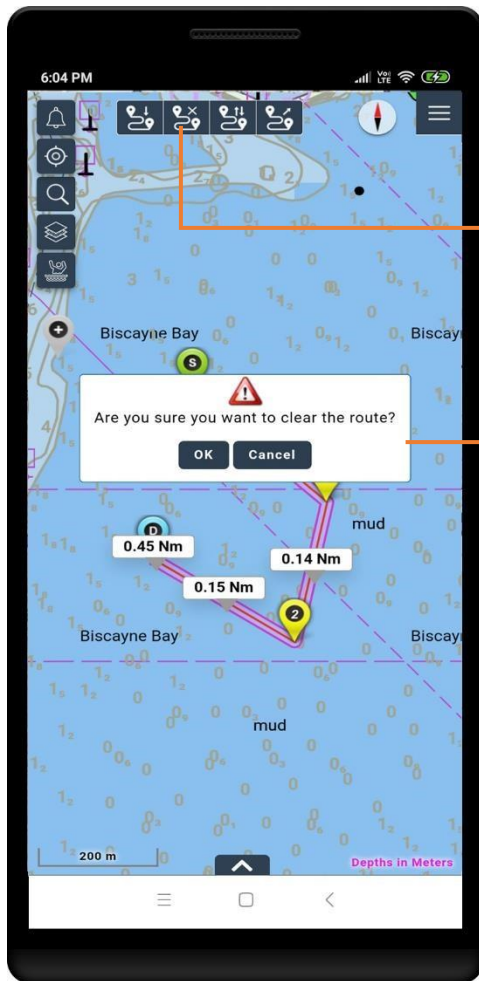


Waypoint details

Tap on Edit to modify the waypoint

Distance will automatically update when edit waypoint

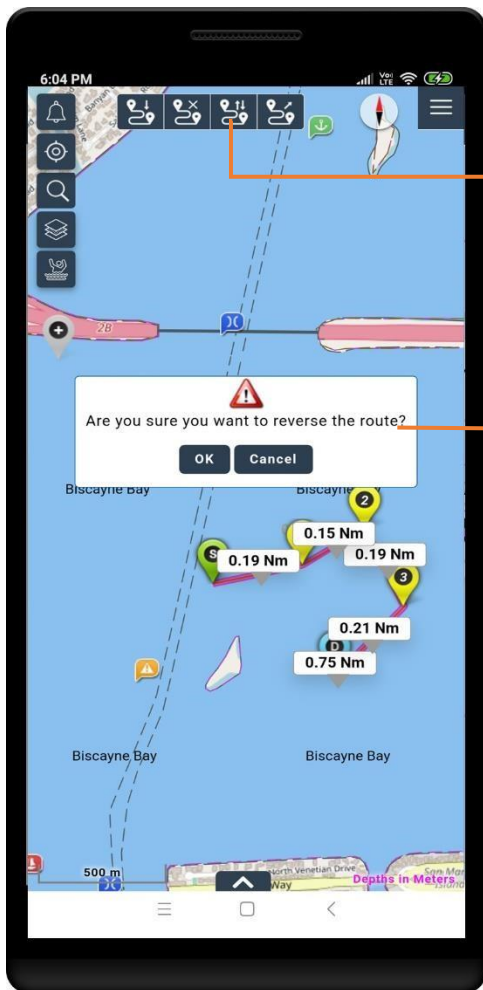
Clear Route



Tap Clear Route icon, displays the following dialogue box

This lets users clear the route by clicking OK

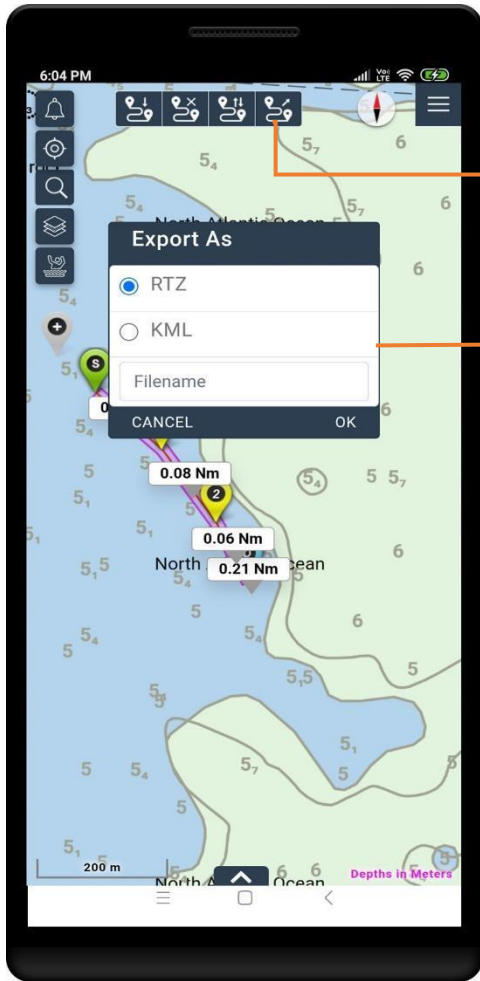
Reverse Route



Tap Reverse Route icon, displays the following dialogue box

This enables users to reverse the existing route – start and destination points by clicking OK

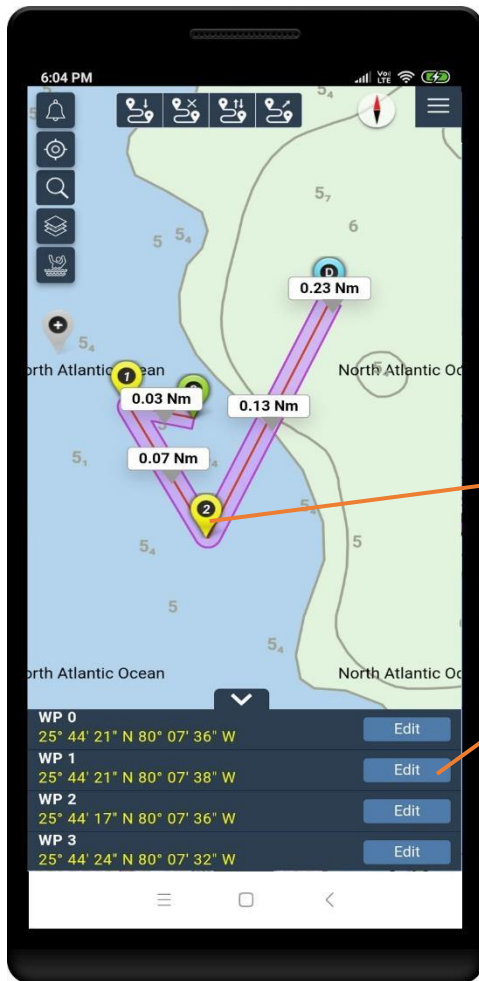
Export Route



Tap Export Route icon

Select the format and click OK to save route

Waypoint List



Waypoint properties can be edited by clicking on waypoint **or**

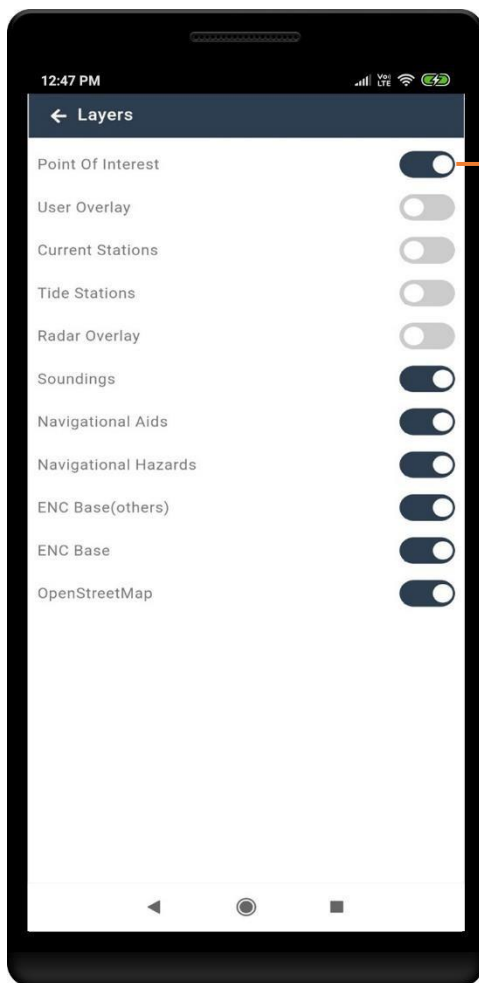
Click **Edit** to modify respective waypoint

Point Of Interest (POI)

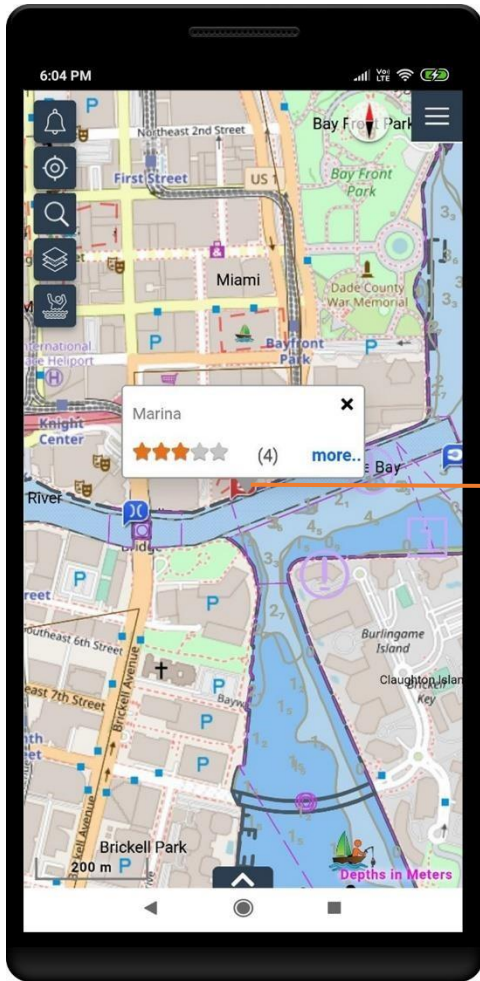
NaAVIC users can now share their experiences and views with Active Captain Community to make all boating adventurers safer and more enjoyable.

NaAVIC integrated Garmin Active Captain Community and users must have an account with Active Captain and should login to share reviews, view different user objects i.e. Hazards, Bridge, Dam, Amenities like Restaurants, Fuel and Transportation etc. near to their place while riding.

Users can also see reviews posted by other community users and can also able to post their reviews as well.

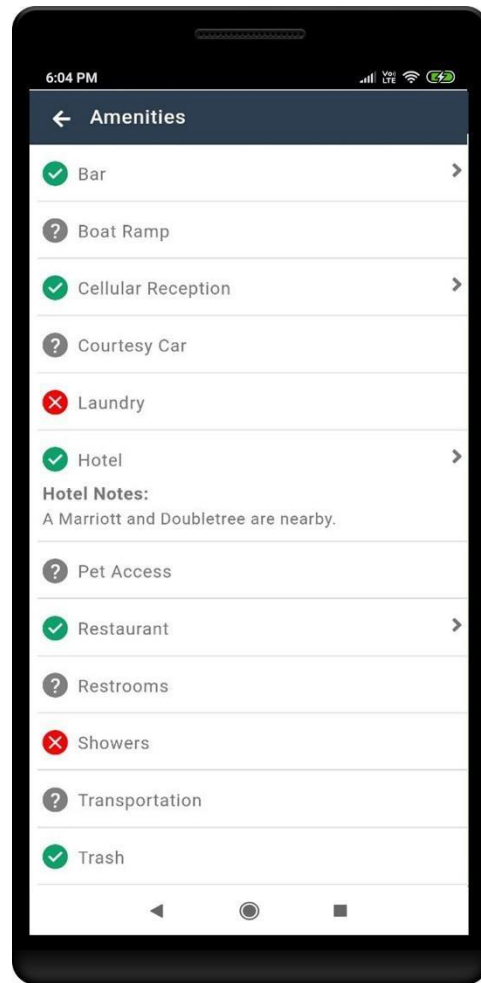
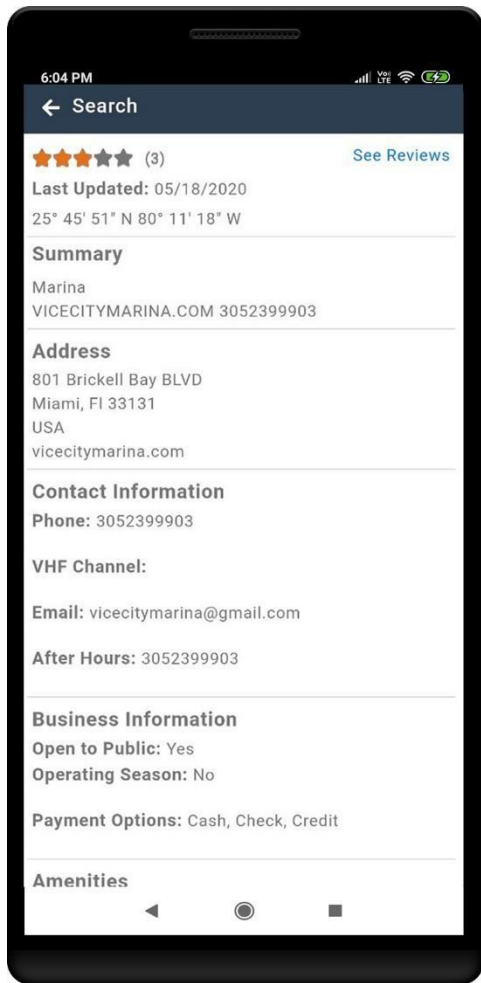


Enable Point Of Interest in Layers to view objects on Map

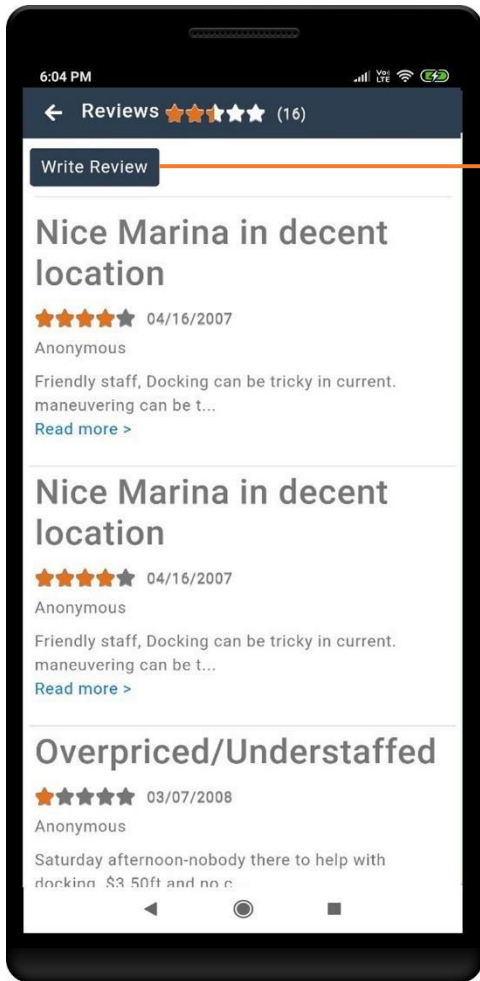


Click on object, popup will be displayed with name of the object and its rating.

Click on "more" to view other information



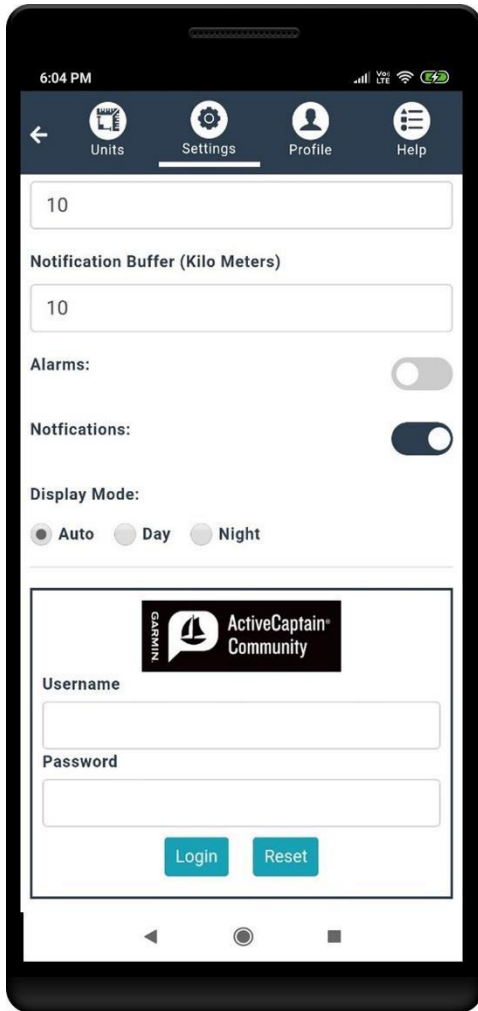
User can view more information about the object like address, contact information, amenities etc. posted by other users.



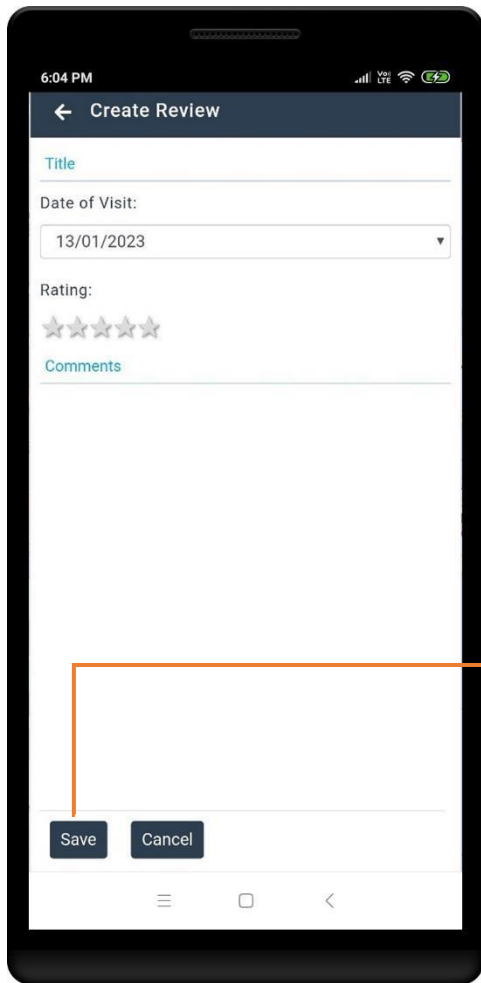
Click to Write Review

Note: To write a review, users have to login to ActiveCaptain

Click on 'Settings' icon > Settings



Use Active Captain Credentials to login – enter user name & password and click on Login



Here, user can write review by giving title, date of visit and select rating.

Click to save details

Navigation

Users can monitor their track or voyage in real time using GPS integration.

Menu > Navigation icon 

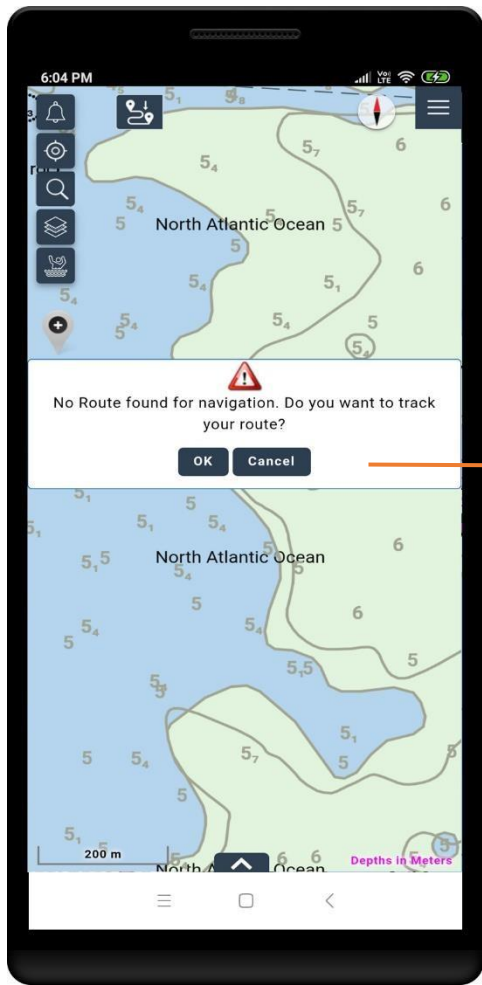
Drag the container handle (in the bottom) up for Navigation Information.



Turn on GPS to Plot the current location and track positioning, tracks history and waypoints. The application will also display navigation information like COG, SOG, Latitude, Longitude etc.

Track your own route

When the route is not found, user prompts with dialogue box to track the route.



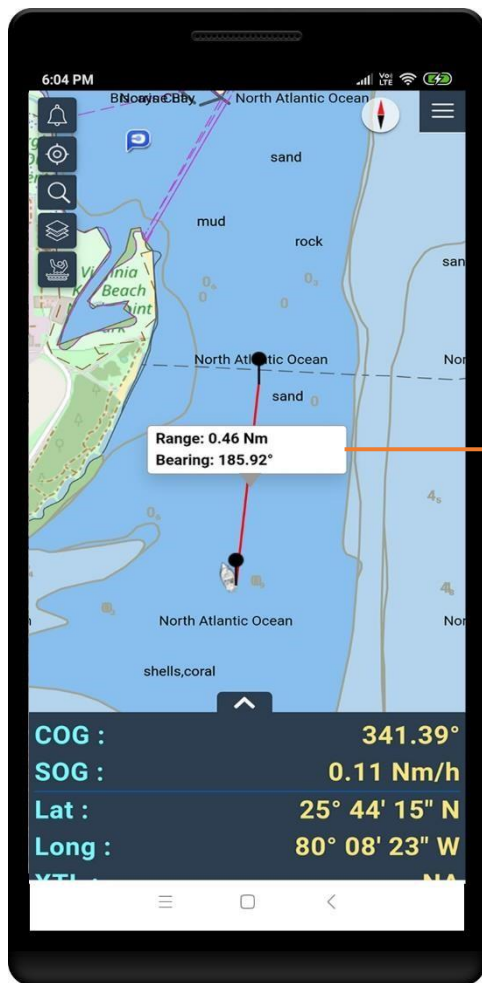
Click OK to track the route

Measure Distance from Ship

This feature calculates the distance between the ships to a known point. Displays Range & Bearing details.

Menu > Multi point distance calculation icon. 

Pick any known point to calculate distance from ship



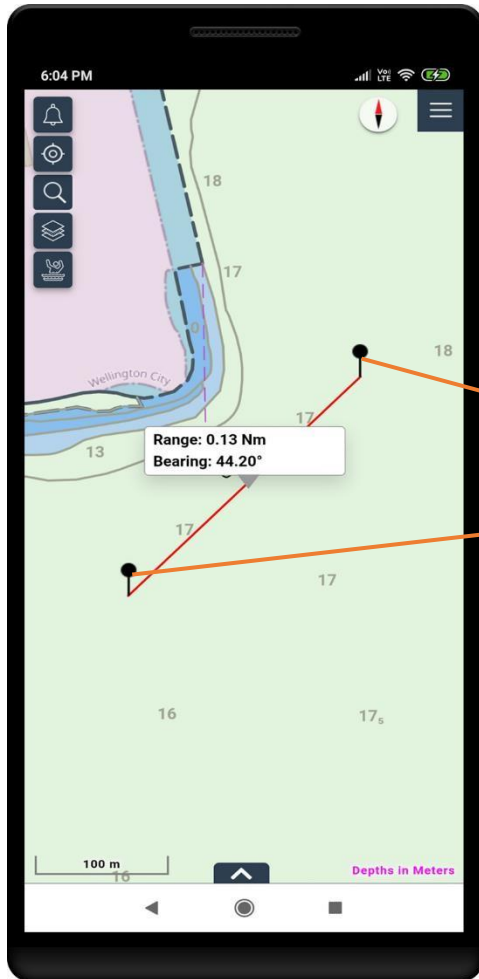
Displays Range & Bearing

Measure Distances

This feature enables users to measure the distance and bearing between two known points or more.

Menu > Measure Distances icon 


Pick two points to calculate the distance and bearing



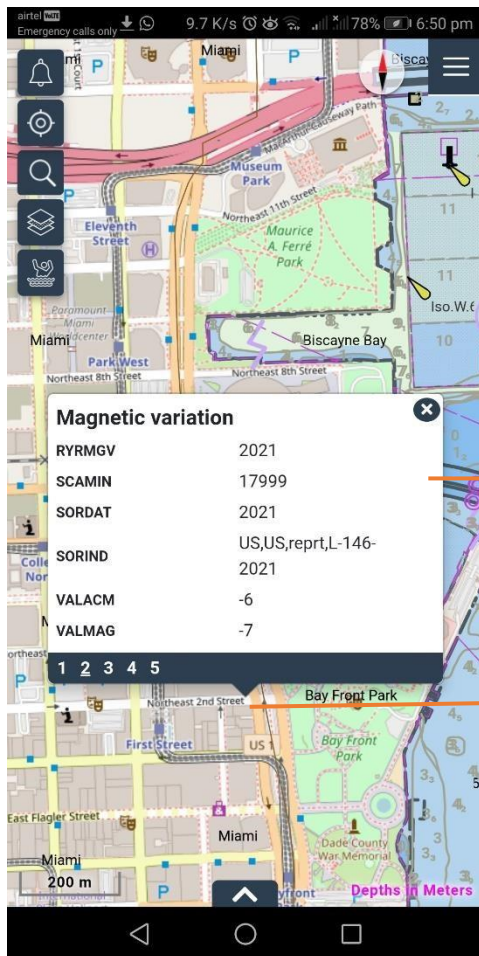
Displays Range and Bearing between two points

Feature Information

This feature enables users to tap on any feature on the screen to get information of that point.

Menu > Information icon. 

Tap on map



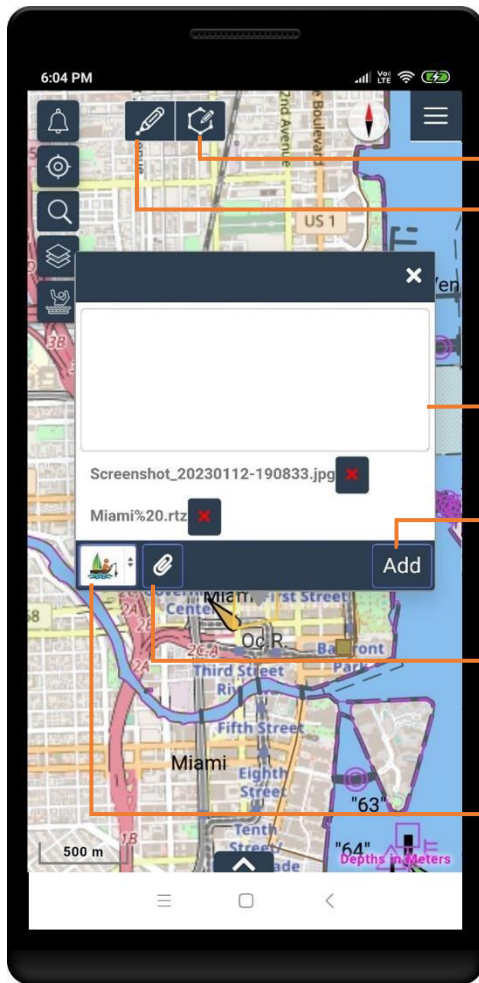
Displays feature's information in detail at the given location. Click on the next number (bottom of info) to know the feature information.

Tap on map

Add Features Object

This feature enables users to add objects with text and media to the User Overlay to share information such as diving, fishing, surfing spots etc. Or interesting photos and sights, with the rest of the NaAVIC community. The User Overlay is visible to all NaAVIC Users but an object can only be modified or deleted by the owner.

Menu > Add Features Objects icon



Draw Polygon.

Draw Point.

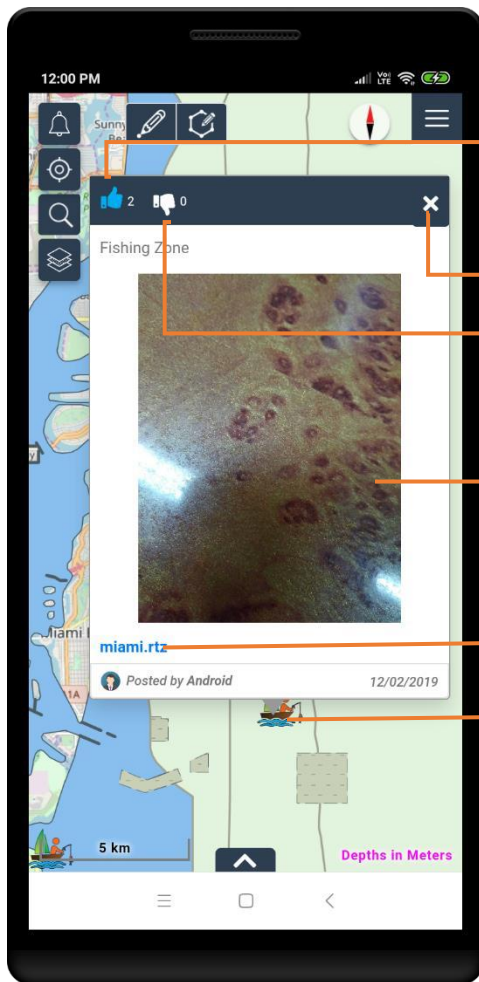
Enter text in the provided text box.

Click on Add to add User object to map

Attach images and Routes or Tracks

Select type of object with predefined icons such as fishing, boating, surfing etc., to display on map.

View User Object



Like

Delete

Dislike

Image

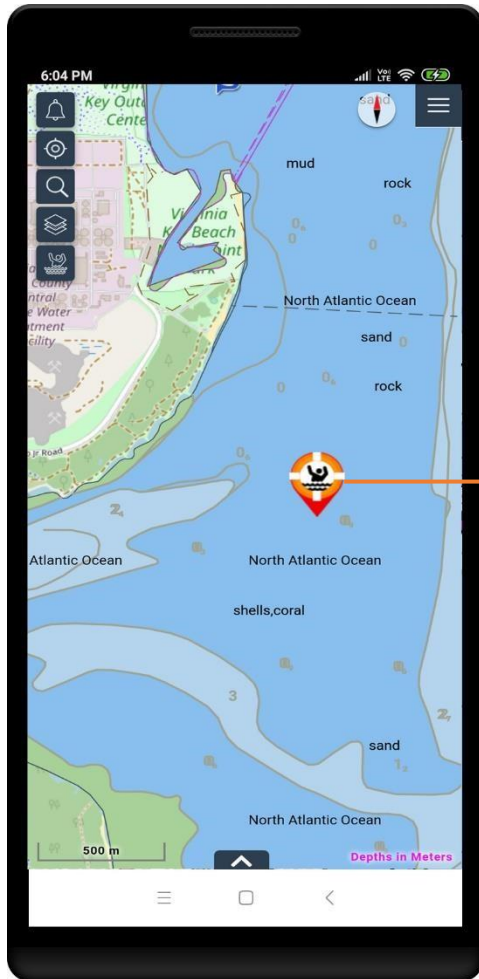
Click on route/track name to plot the route/track on map

Click on user object to view respective object information

Man over Board

Using this feature NaVIC users can let other registered users know if any person has fallen off board and needs help.

Menu > Man over Board icon 



Notifies if anyone falls off the vessel or needs any assistance on the voyage

Offline Maps

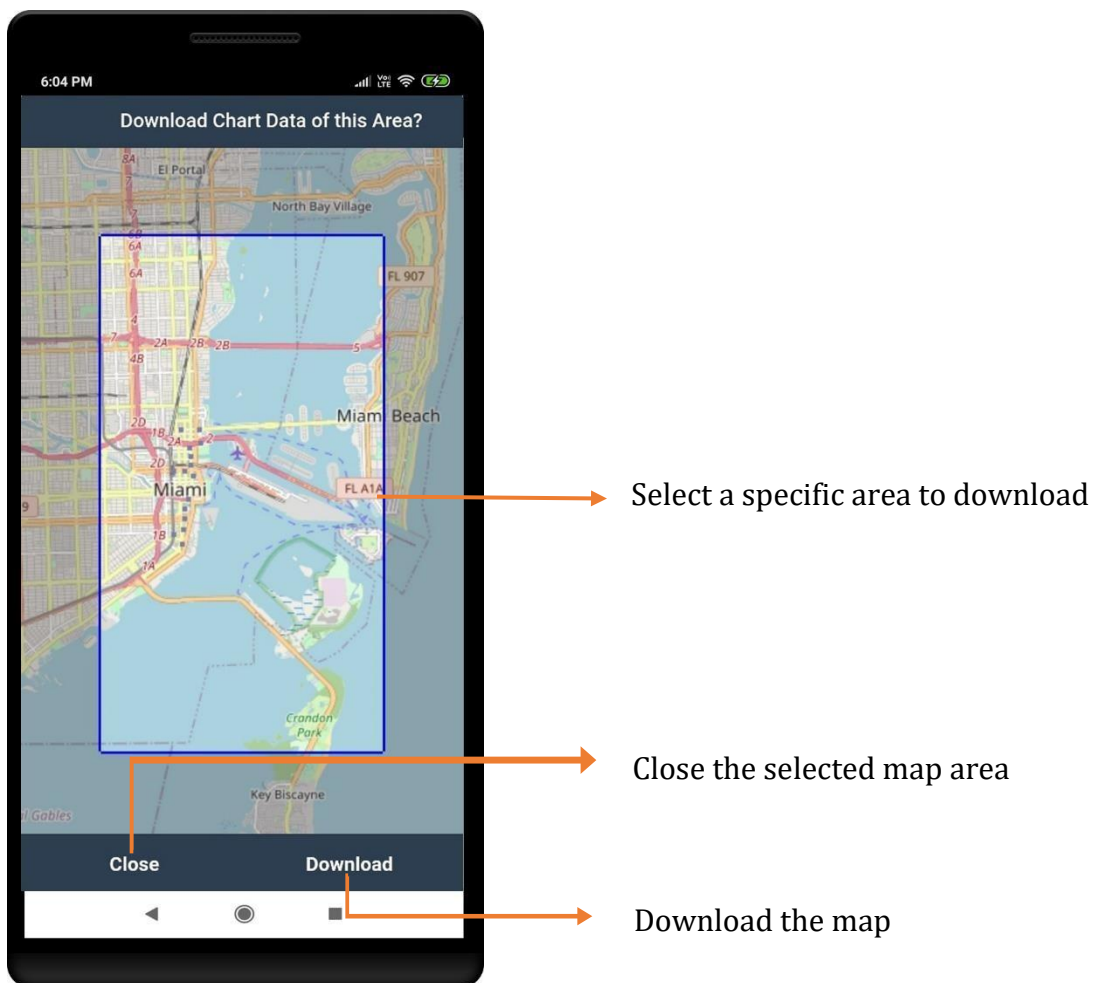
This feature lets users download maps for offline use.

Menu > Offline Maps icon 

Choose the navigation area by zooming in and out


Click on 'Download'

Note: The offline data will be stored in local device and hence the application use the data while navigation.

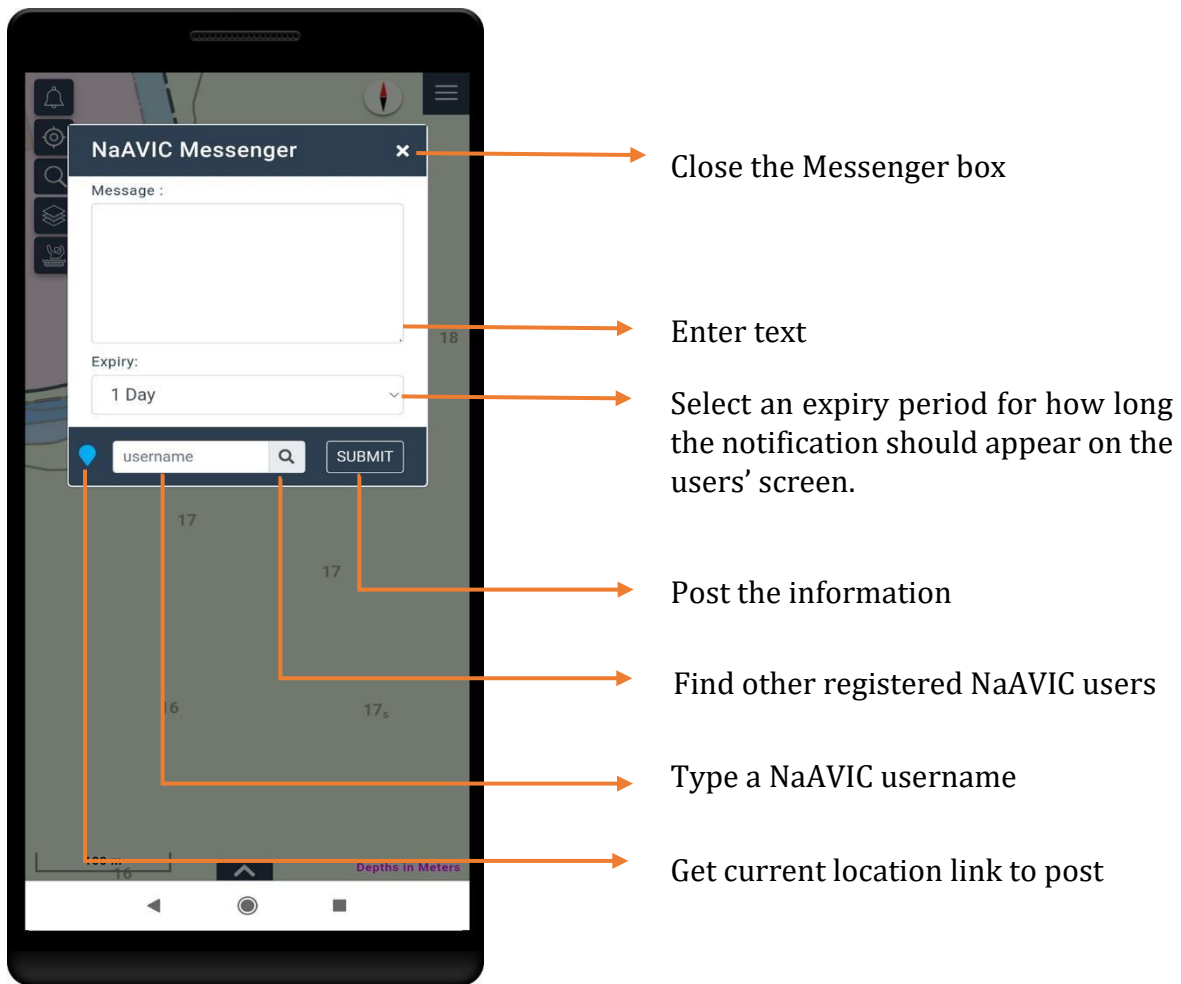


NaAVIC Messenger

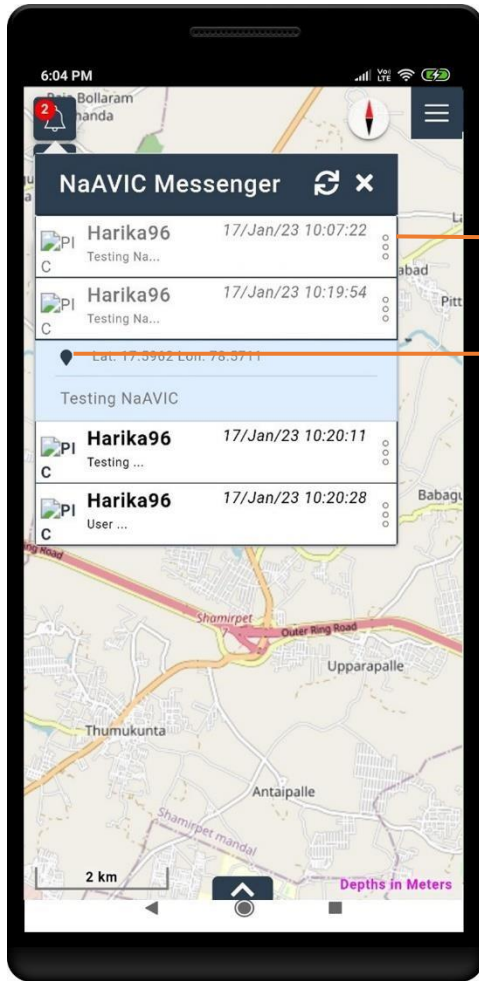
Using this feature users of NaAVIC can send information, location etc. to other users. Users can set an expiry period for the notifications.

Menu > Messenger icon 

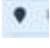
Compose



Notification View



Displays all notifications

Click on  to zoom the location

Settings

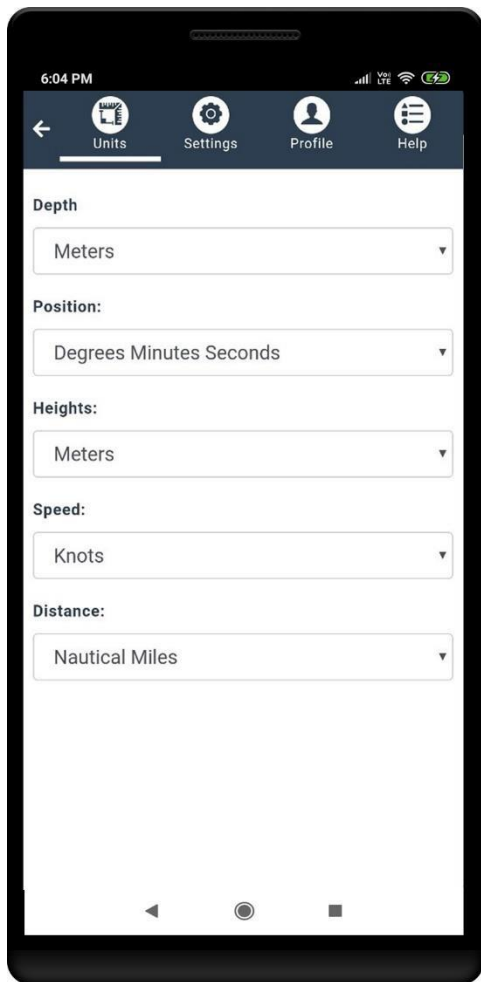
Go to Settings to customize the various available features and modify the user profile.

Menu > Settings icon 

The Setting function shows below options to configure the application in terms of, display, Units, Profile information and Legend of Chart Symbols & Abbreviations.

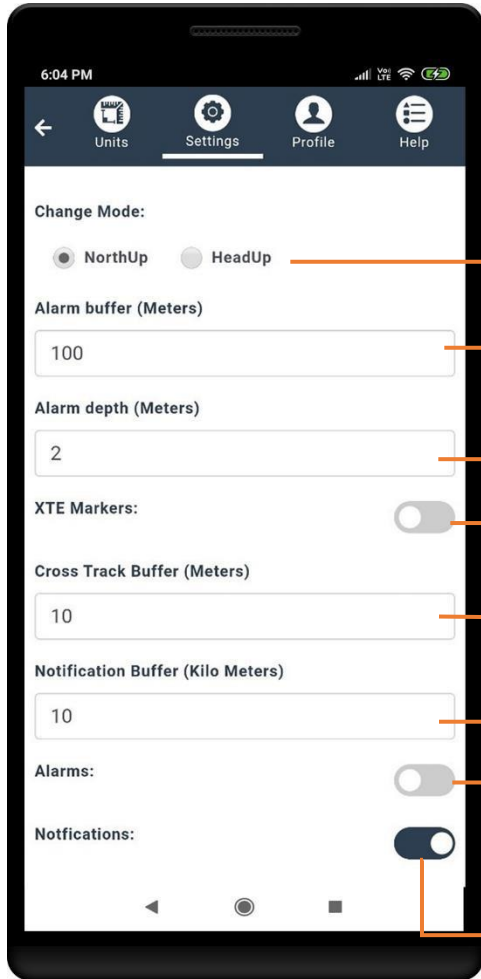
- Units
- Settings
- Profiles
- Help

Units



Set units for Depth, Position, Heights, Speed and Distance using the available drop-down.

Settings



User can check radio button for Northup or Head Up display orientation when navigation

Set value for Alarm buffer in meters and get notified

Set value for Alarm depth in meters and get notified if depth meets the distance.

To show cross track markers

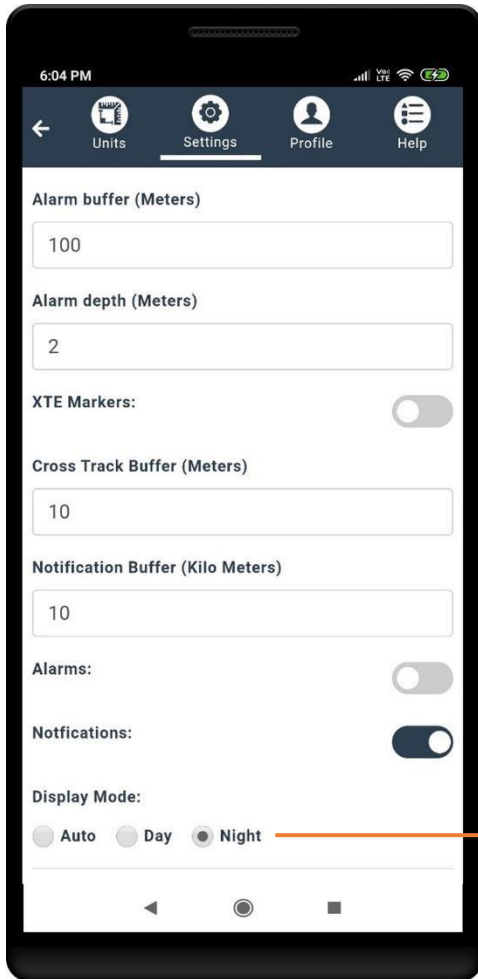
Set value for Cross Track buffer in meters and get notified if vessel crosses defined route while sailing.

Set value for Notification buffer in KMS at which circumference the user wants to get notifications.

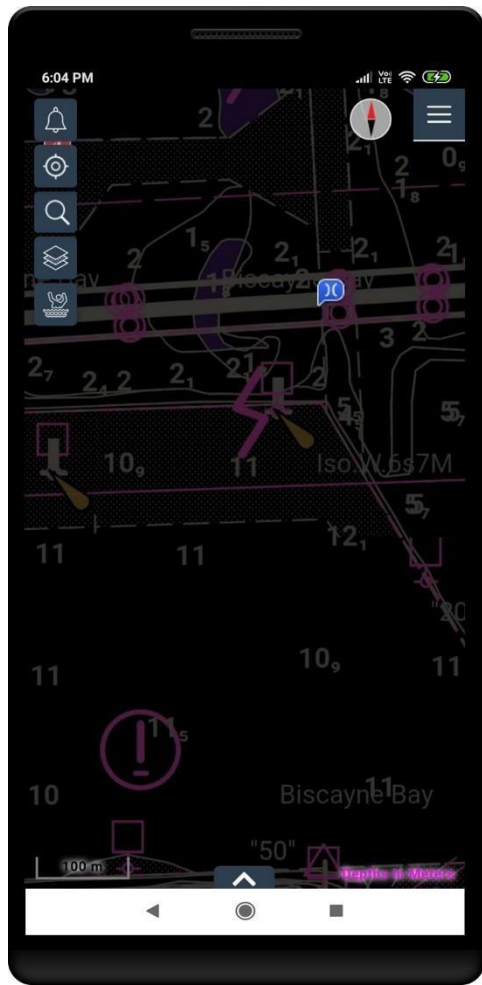
Alarm On/Off. When Alarms feature is enabled, the voice mode turns on

Notification On/Off

Night Mode



Night Mode activates when the sun sets, or the user can manually set it using the Display Mode.

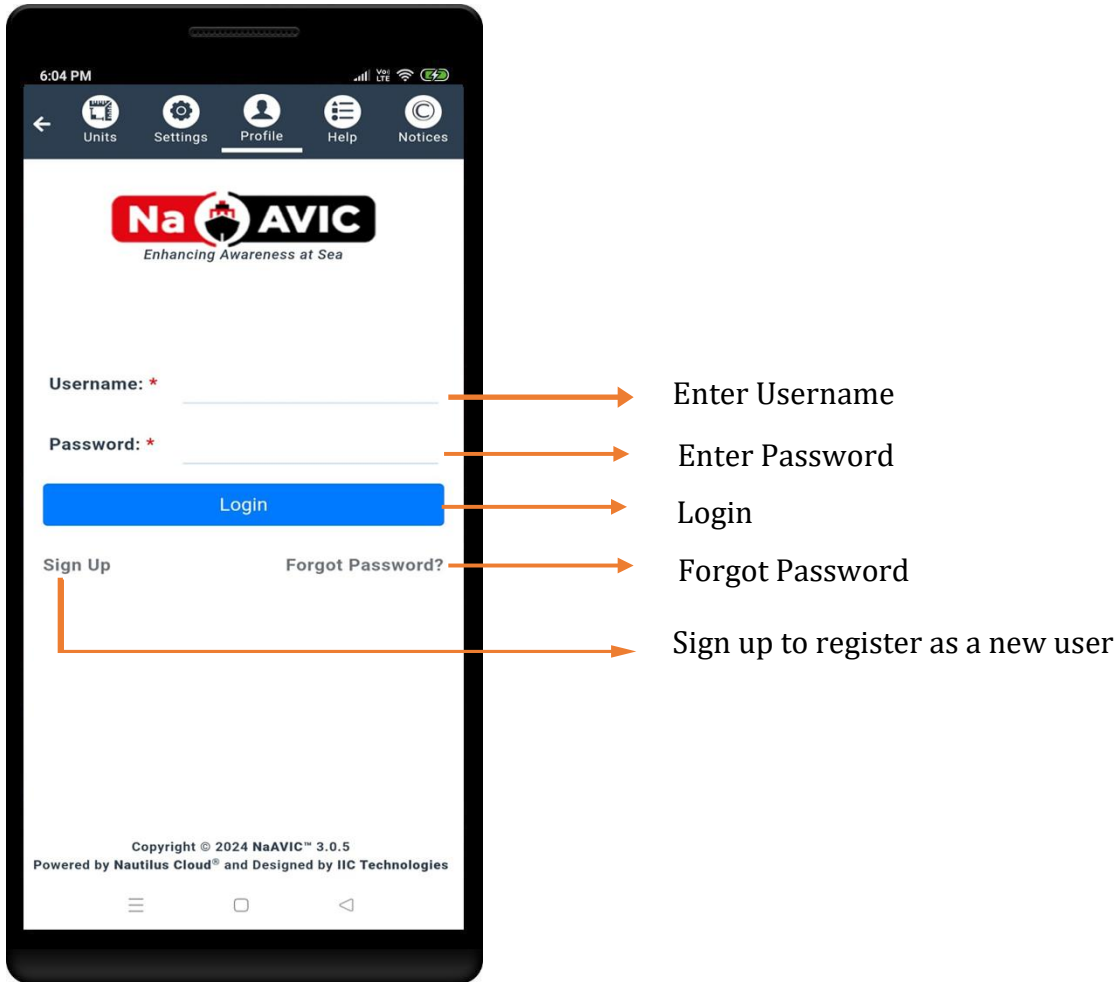


Screen displays night mode when selected

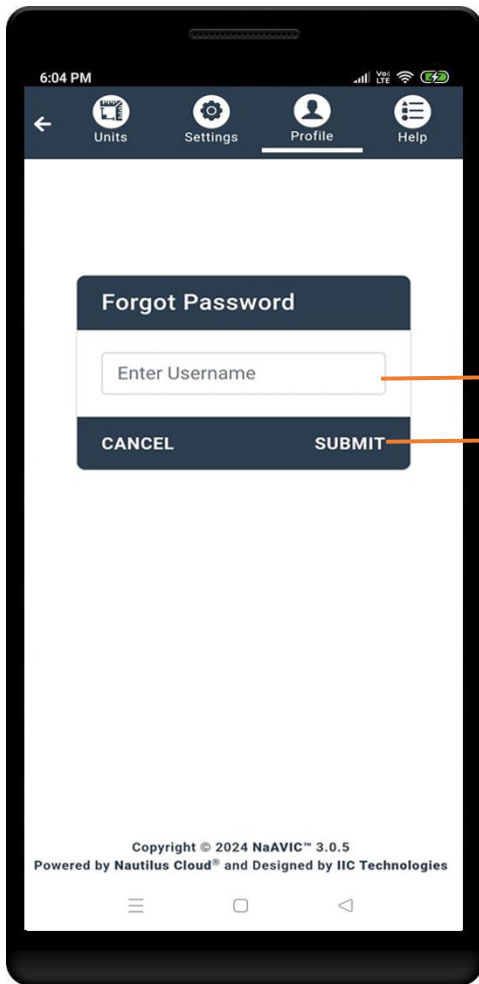
Profile

The profile tab lets users view and modify their profile and invite friends to the NaAVIC community.

Sign In



Forgot Password



Enter Username

Click Submit

A pop-up window will appear with the message
'Password reset link has successfully been sent
to the registered email'

Sign Up

6:04 PM

Units Settings Profile Help

NaAVIC
Enhancing Awareness at Sea

Username: * Username

Password: * Password

Email: * Email

I Accept and Agree to [Terms of Service](#) and [Privacy policy](#).

Sign Up

Login

Copyright © 2024 NaAVIC™ 3.0.5
Powered by Nautilus Cloud® and Designed by IIC Technologies

To Sign Up, fill out all the required fields on the screen. Agree to the privacy policy and terms of service.

Enter Username

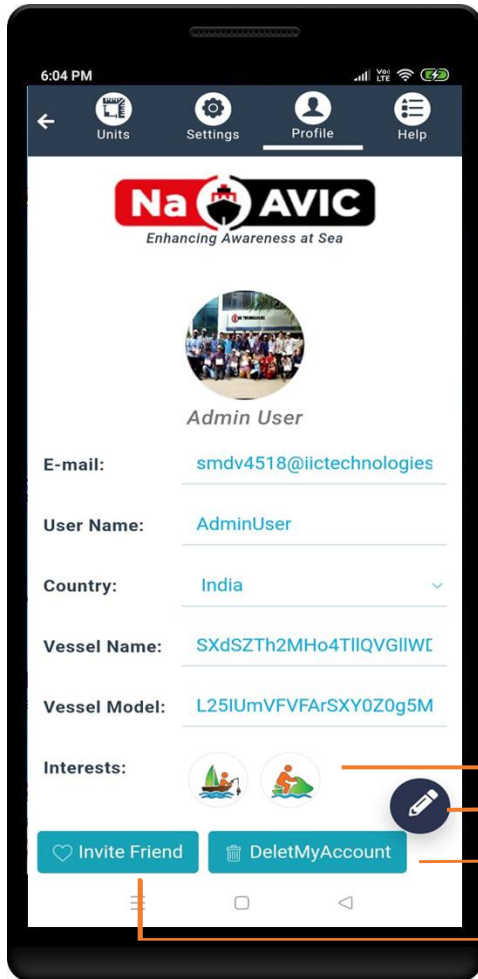
Enter Password

Enter Email Id

Accept the Terms of Service and Privacy

The user will be notified once the registration is successful and can sign in with the new credentials.

View Profile



User details such as Email, User Name, Country, Vessel Name and Vessel

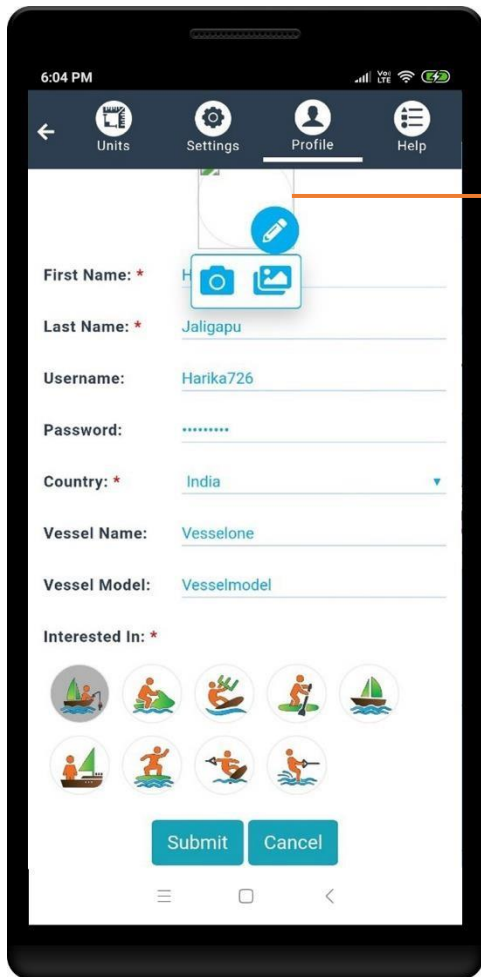
Interests

Edit user profile

Delete the user account

Invite friends to join NaAVIC. It opens the default email application on device.

Edit Profile

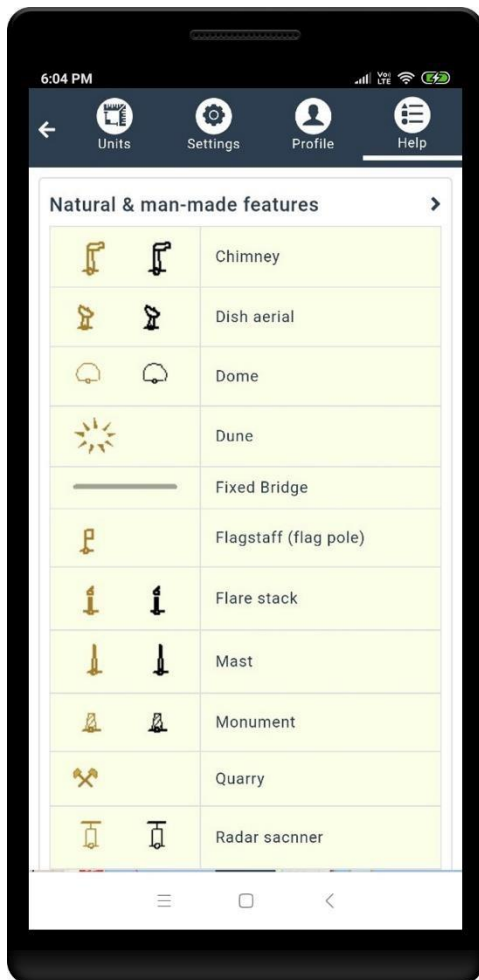


Modify profile picture using the edit icon

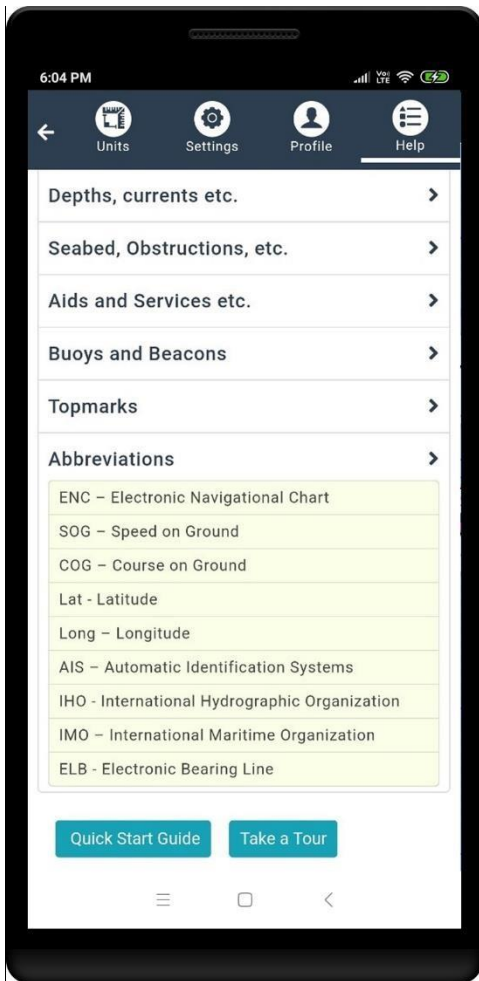
Change profile details such as user name, password etc.

Modify Interests

Help



Legend of Navigational Charts symbols along with descriptions



Included Abbreviations with description for easy understand to user, which were used in application, while navigation